

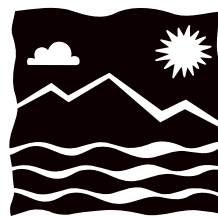
# Quebec-New York Connection



## The Economic Impact of Canada on Clinton County, New York 2004

A PROJECT OF THE QUEBEC-NEW YORK CORRIDOR COALITION

and the



PLATTSBURGH  
NORTH COUNTRY  
CHAMBER OF COMMERCE

[www.quebecnewyorkcorridor.com](http://www.quebecnewyorkcorridor.com)

## Who Do You Call...

when you don't  
know the question?

Getting your people into the States on a temporary work permit is not easy. Sometimes you need answers to questions nobody thought to ask.

A quick call to the experts at Crossborder Development Corporation will make your life easier.

We do not charge for phone consultations. Our fees are always quoted in advance and our toll-free line can be used from any location in North America.

Check our references at  
[www.crossborderinc.com](http://www.crossborderinc.com)  
or give us a call.

**CDC**  
Crossborder Development  
Corporation

158 Lake Street  
Rouses Point, NY 12979  
800-545-8125

## WE DON'T SELL HOMES!

C O M M E R C I A L



M A N U F A C T U R I N G



W A R E H O U S I N G



At CDC we focus exclusively on commercial and industrial properties.

If your realtor is too busy selling homes to talk to you about investment properties call CDC.

**NO ONE DOES IT BETTER!**

**CDC**  
Real Estate

800-545-8125  
[www.crossborderinc.com](http://www.crossborderinc.com)

CDC is a Licensed Real Estate Broker.

## Trusted by Businesses on both sides of the border

Accounting & Auditing  
Management Consulting  
Tax Planning & Preparation  
Financial Planning

518-561-7030  
[www.afrc-cpa.com](http://www.afrc-cpa.com)

**AFRC**

Abbott, Frenyea, Russell & Coffey PC  
Certified Public Accountants

# The Economic Impact of Canada on Clinton County



## **TOTAL ECONOMIC IMPACT:**

**1994:  
\$784.5 MILLION**

**1996:  
\$1.27 BILLION**

**1998:  
\$1.32 BILLION**

**2000:  
\$1.33 BILLION**

**2002:  
\$1.39 BILLION**

**2004: \$1.53 BILLION**

**PLATTSBURGH =  
MONTREAL'S U.S. SUBURB**

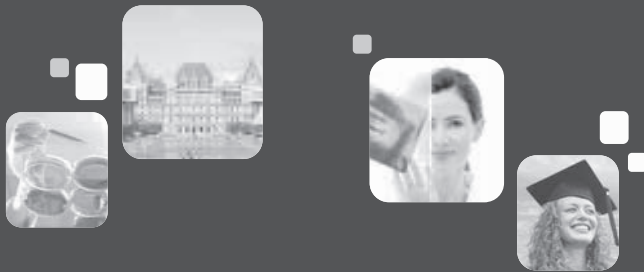
# HIGHLIGHTS

## EXPORT SALES FROM CLINTON COUNTY

(To or through Canada)

Year	Export Sales
1987	\$71,877,000
1992	\$128,240,000
1994	\$187,724,000
1996	\$488,588,203
1998	\$526,144,744
2000	\$524,986,171
2002	\$566,186,616*
2004	\$518,060,754*

\*Actual data not available. These calculations are in line with manufacturing in Clinton County.



Serving North Country and  
Canadian clients with regional and  
cross-border matters.

**Lawyers you'll swear by.®**

**You can swear by our knowledge of your business,  
by our focus on your needs,  
by our ability to provide immediate value, and  
by our solid legal advice.**

**Harris Beach. Lawyers you'll swear by. Not at.**

**150** YEARS OF LOOKING AHEAD  
**HARRIS BEACH** PLLC  
ATTORNEYS AT LAW

To see how we can help you, call Bill Owens at (518) 561-4400  
or visit [www.harrisbeach.com](http://www.harrisbeach.com)

# HIGHLIGHTS

## EMPLOYMENT

Number of Employees of Canadian-owned Businesses, International Border Businesses & Border Agencies in Clinton County:

Employment	Percent of County Total:
1994: 2,483	7.5%
1996: 2,927	9.2%
1998: 3,588	11.6%
2000: 4,508	13.5%
2002: 4,646	14.2%
<b>2004: 4,540</b>	<b>14%</b>

Payroll of Canadian-owned Businesses, International Border Businesses & Border Businesses in Clinton County, plus their use of Clinton County based Temporary Employment Services:

**1994:** \$59,745,965   **1996:** \$77,489,913   **1998:** \$99,691,377   **2000:** \$132,942,602   **2002:** \$152,706,428

**2004 \$160,271,729**

Trade at any longitude—  
with a lot more latitude.

Customs brokerage  
Global cargo distribution  
Trade facilitation solutions



Wherever in the world you trade, FedEx Trade Networks can help make your business more reliable and more efficient. We free you from the all-too-typical glitches, holdups, and headaches.

And we can support you in every major aspect—from customs brokerage to international freight forwarding to trade facilitation. Need one source for end-to-end support in global trade?

**Relax, it's FedEx.**

**FedEx**  
Trade Networks

# HIGHLIGHTS

## BANKING IN CLINTON COUNTY

Client Type	Average Collected Balances					
	1994	1996	1998	2000	2002	2004
Canadian Individuals	\$185,611,450	\$98,290,775	\$30,104,533	\$42,420,000	\$40,712,581	\$36,489,306
Canadian-owned Businesses in Clinton County	\$8,427,473	\$13,836,130	\$9,198,017	\$7,740,076	\$7,267,200	\$4,462,714
Canadian-owned Businesses not in Clinton County	\$19,000,000	\$9,100,000	\$951,494	\$3,475,000	\$3,463,000	\$6,048,000
International Border Businesses	\$3,593,267	\$3,603,781	\$3,130,714	\$876,361	\$3,108,200	\$5,100,215
Public Border-related Agencies	\$13,099	\$45,198	\$30,000	\$50,000	\$802,948	\$60,000
TOTAL	\$216,645,289	\$123,875,884	\$43,414,759	\$54,561,437	\$55,353,929	\$52,190,235

## MACHINERY AND EQUIPMENT

Total reported value of machinery and equipment purchased by Canadian owned businesses and border agencies in Clinton County:

**1994:** \$5,504,150   **1996:** \$15,757,026   **1998:** \$11,284,239   **2000:** \$21,018,438   **2002:** \$10,857,522

**2004: \$45,857,522**

# HIGHLIGHTS

## REAL ESTATE

Equalized assessed value and Property Tax contributions of Canadian-owned, International Border Business and Border Agency  
Commercial Property in Clinton County:

	1994	1996	1998	2000	2002	2004
VALUE:	\$50,209,640	\$243,862,321	\$275,736,334	\$285,518,359	\$268,753,57	\$295,689,006
TAXES:	\$570,707	\$3,258,289	\$2,516,554	\$3,967,757	\$4,238,307	\$5,040,136

Equalized assessed value and Property Tax contributions of Canadian-owned Residential Property in Clinton County:

	1994	1996	1998	2000	2002	2004
VALUE:	\$20,191,457	\$22,163,530	\$20,226,509	\$17,213,824	\$15,905,600	\$15,806,700
TAXES:	\$527,285	\$530,737	\$494,627	\$393,143	\$383,214	\$365,044

### 2004 TOTAL PROPERTY TAXES (COMMERCIAL AND RESIDENTIAL):

**\$5,405,180**

## RENTAL OF COMMERCIAL SPACE BY CANADIANS (Total Reported)

**1994:** \$1,077,670 **1996:** \$2,437,924 **1998:** \$3,342,648 **2000:** \$4,441,863

**2002: \$4,262,159**

## ENERGY

Value of Canadian Natural Gas used in Clinton County:

**1994:** \$31,425,499 **1996:** \$57,290,469 **1998:** \$64,396,166 **2000:** \$81,714,379 **2002:** \$82,257,053

**2004: \$88,392,031**



# HIGHLIGHTS

## ACCOUNTING, LEGAL AND INSURANCE SERVICES

Value of business conducted in Clinton County with Canadians, Canadian-owned Businesses, International Border Businesses and Border Agencies (Totals reported):

1994: \$3,284,485

1996: \$3,423,993

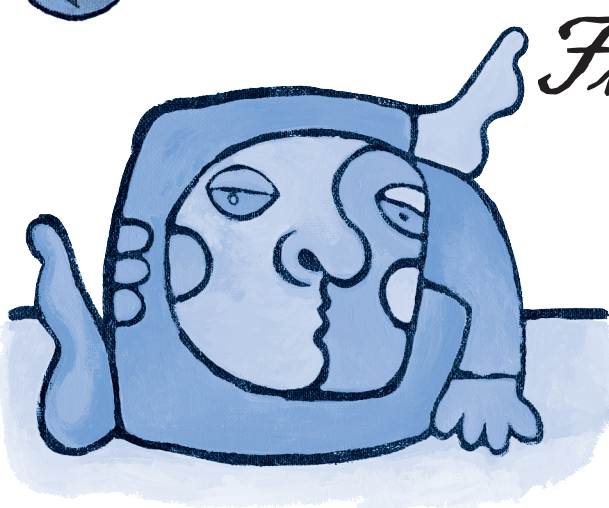
1998: \$13,926,384

2000: \$10,495,281

**2002: \$33,437,393**



What do you need to ensure a smooth and efficient supply chain?



*Flexible Service!*

Deringer is the partner you need when you have a large volume of shipments and complicated transportation networks. We design and manage logistics processes to fit your specific needs. We also help you anticipate and plan effectively for new programs so you can comply with the ever changing, increasingly complex demands of international trade.

Your Deringer Team is Committed to Your Success.

**DERINGER®**  
Managing Logistics • Maximizing Opportunity

Contact our Service Specialists for  
information on our wide range of services.

1-888-612-6239 • [www.nderinger.com](http://www.nderinger.com)



# HIGHLIGHTS

## CANADIAN VISITOR SPENDING-TOURISM AND RETAIL

**1995:** \$193,934,533 **1996:** \$224,694,634 **1998:** \$253,992,701 **2000:** \$193,711,356 **2002:** \$292,594,740

**2004: \$310,150,424\***

County Sales Tax Generated (3%):

**1995:** \$5,809,757 **1996:** \$6,740,839 **1998:** \$7,619,781 **2000:** \$5,811,340 **2002:** \$8,777,842

**2004: \$9,304,500**

Average spending by Canadian Visitors Per Trip in Clinton County:

**1995:** \$156.42 **1996:** \$168.89 **1998:** \$266.78 **2000:** \$213.70 **2002:** \$283.82

**2004: \$284.98**

\*Based on surveys indicating a 6% increase.



## THE DEVELOPMENT CORPORATION

A Strong History,  
a Bright Future.

## Clinton County...

Your gateway between the  
bright lights of Montreal, the  
Green Mountains of Vermont  
and the crisp mountain air  
of the Adirondacks!

*New York State Empire Zone  
Designated Shovel-Ready Sites.*

*Helping Businesses Relocate to — and Expand in Clinton County, New York*

61 Area Development Dr., Plattsburgh NY 12901

tel (888) 699-6757 • tel (518) 563-3100 • fax (518) 562-2232

tdc@thedevelopcorp.com • www.thedevelopcorp.com

# HIGHLIGHTS

## MEDIA, EDUCATION AND CULTURE

Value of Canadian connected advertising and sponsorships received by Television, Radio and Magazine Media in Clinton County, plus Tuition and Non-Tax Receipts by public and private schools, and charitable contributions:

**1994:** \$4,549,645 **1996:** \$4,576,251 **1998:** \$2,958,348 **2000:** \$1,500,209 **2002:** \$1,616,472

**2004: \$1,578,165**



### Connect with ETS

**Meeting All of Your  
Human Resource Needs**

- Recruitment/Executive Search
- Temporary • Consulting

186 US Oval, Plattsburgh, NY 12903  
toll free (877) 303-7737 • tel (518) 562-4673  
fax (518) 563-3327 • [www.etsjobs.com](http://www.etsjobs.com)



**A Human Resources Network**  
*Bringing People & Business Together™*



# QUEBEC-NEW YORK

**“One region...one future”**

**AN HISTORIC OPPORTUNITY**



North America is in the midst of an economic realignment of historic proportions - and the Quebec- New York Corridor has become one of the key connections and beneficiaries of the shift.

From the days of European settlement, both the U.S. and Canada have been dominated by economic development strategies along an east-west axis. Each worked for two centuries to open up the interiors, developing roads, canals and trans-continental railways to tap raw materials and feed coastal industrial centers and ports.

But now the emphasis is shifting to a new north-south axis as the U.S. and Canadian economies integrate, with Mexico following as well. And one of the results is the emergence of a handful of north-south trade corridors which possess the critical transportation links between Canada and the U.S and which are becoming more than growing commercial routes - they are now NEW, BI-NATIONAL ECONOMIC REGIONS.

## OUR CORRIDOR REGION

One of the most important such corridors is the QUEBEC-NEW YORK CORRIDOR which at its core exists from Montreal to Albany, with connections throughout both Quebec and New York State.

For the Plattsburgh-Champlain gateway area in Clinton County, New York, this means:

- We are now a GLOBALLY SIGNIFICANT GATEWAY to and from the WORLD’S RICHEST MARKET.
- We are now MONTREAL’S U.S. SUBURB, tied directly to that region’s amazing assets and opportunities, ranging from its port and logistical advantages to all of its cutting edge industries of tomorrow.
- We are a HIGHLY SPECIALIZED SERVICE CENTER, uniquely qualified to support all aspects of Canadian-U.S. interaction wherever they occur.

This updated assessment is a mere snapshot of the impact of this two-way phenomenon on just the U.S. gateway county, demonstrating that something enormously significant and very positive is in fact occurring between New York and Quebec.

EXCITEMENT IS BUILDING AND ECONOMIC INTERESTS OF ALL KINDS ARE COMING TOGETHER WITHIN THE QUEBEC-NEW YORK CORRIDOR REGION. We are collectively recognizing and pursuing the rich opportunities now at our doorstep.

The QUEBEC-NEW YORK CORRIDOR COALITION of the Plattsburgh-North Country Chamber of Commerce has been a leader in revealing these opportunities and building crossborder business of all kinds. It provides a link to hundreds of private and public interests throughout the bi-national Corridor region.

WE INVITE YOU TO CONTACT US FOR MORE INFORMATION, AND TO EXPLORE ALL OF THE WAYS YOU MIGHT BECOME A PART OF ONE OF NORTH AMERICA’S MOST STRATEGIC, DYNAMIC AND FORWARD LOOKING REGIONS!

**PLATTSBURGH-NORTH COUNTRY CHAMBER OF COMMERCE**  
Tel: (518) 563-1000 \* Fax: (518) 563-1028 \* [chamber@westelcom.com](mailto:chamber@westelcom.com)  
[www.northcountrychamber.com](http://www.northcountrychamber.com) [www.quebecnewyorkcorridor.com](http://www.quebecnewyorkcorridor.com)

# Northeast Printing & Distribution Company, Inc.

"The Full Service Company"

## Printing

- Single to Full Color
- Sheetfed Presses to 28" x 40"
- 14" Six Color Mini-Web
- Full Service Bindery
- Packaging, Shrink-wrap and Poly-bag

## Mail Processing

- All Mail Classes
- National Change of Address
- Domestic and International Mail
- Folding, Inserting, Tabbing and Labeling
- Barcoding and Zip+4

## Distribution/Transportation

- Pick & Pack
- Small Parcel Shipping
- Cross Dock
- LTL and FTL Freight
- Heated, Sprinklered and Alarmed Warehouse



initiate produce  
distribute



Northeast Printing & Distribution Company, Inc.  
12 Nepco Way, Plattsburgh, NY 12903 • 518.563.8214 • [www.nepcomail.com](http://www.nepcomail.com)

# Join us as we grow an airport...



## Plattsburgh International Airport

Montreal's U.S. Airport  
[www.montrealairport-us.com](http://www.montrealairport-us.com)

**Let us talk to you about how we can help your industrial or aviation-related business work and thrive at this facility!**

The aviation assets of the former Plattsburgh Air Force Base are now being redeveloped as **Plattsburgh International Airport**. This strategic location has tremendous opportunity for all types of aviation operations — including yours!

### Some main features of this facility include:

- A 11,700 foot runway
- 12 million square foot concrete ramp space
- 1.5 million square feet of aviation-related industrial space
- Multi-modal capabilities with direct access to rail, an immediate interchange on **Interstate 87**, and just one hour from the **Port of Montreal** (North America's #1 Trans-Atlantic Seaport)
- New passenger terminal under construction for completion in fall 2006

### Offering exciting opportunities for:

- Airlines & Charters
- Cargo
- Maintenance
- Manufacturing
- Anything to do with anything that flies!

Call us today for  
more information!

**518-563-1000**



PLATTSBURGH  
NORTH COUNTRY  
CHAMBER OF COMMERCE